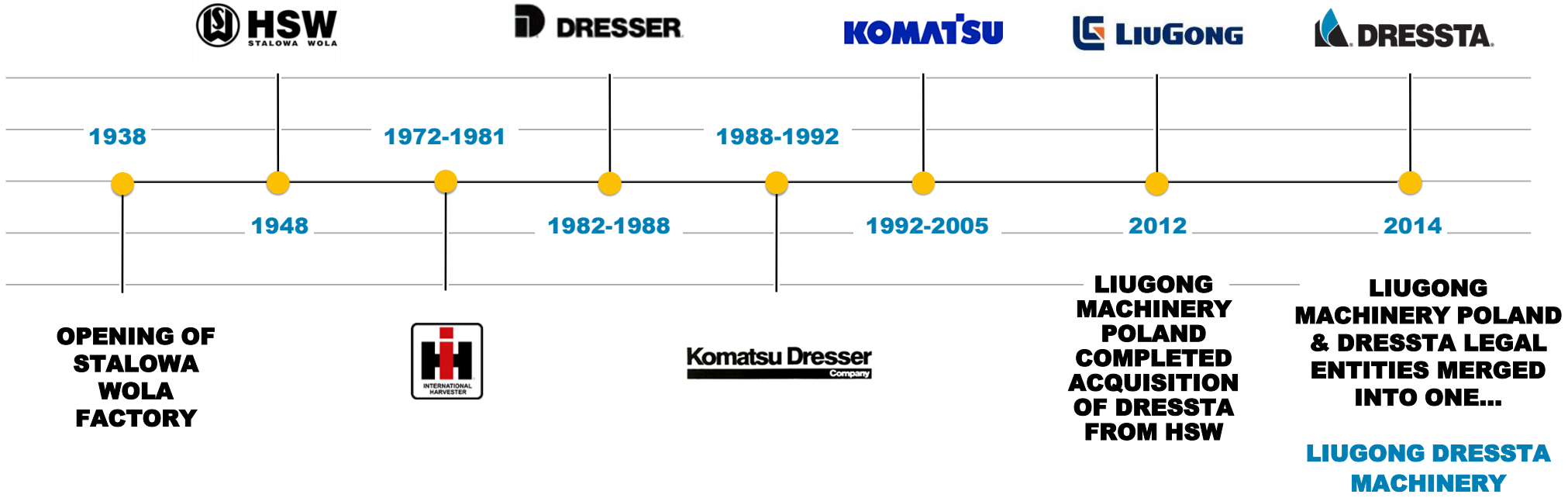




ENGINEERED FOR YOUR BUSINESS

# Our History

A RICH HERITAGE & STRONG PEDIGREE



# Our Company Structure



**GUANGXI LIUGONG MACHINERY CO. LTD.  
(CHINA)**



**LiuGong Dressta Machinery  
(POLAND)**



**CONSTRUCTION EQUIPMENT**



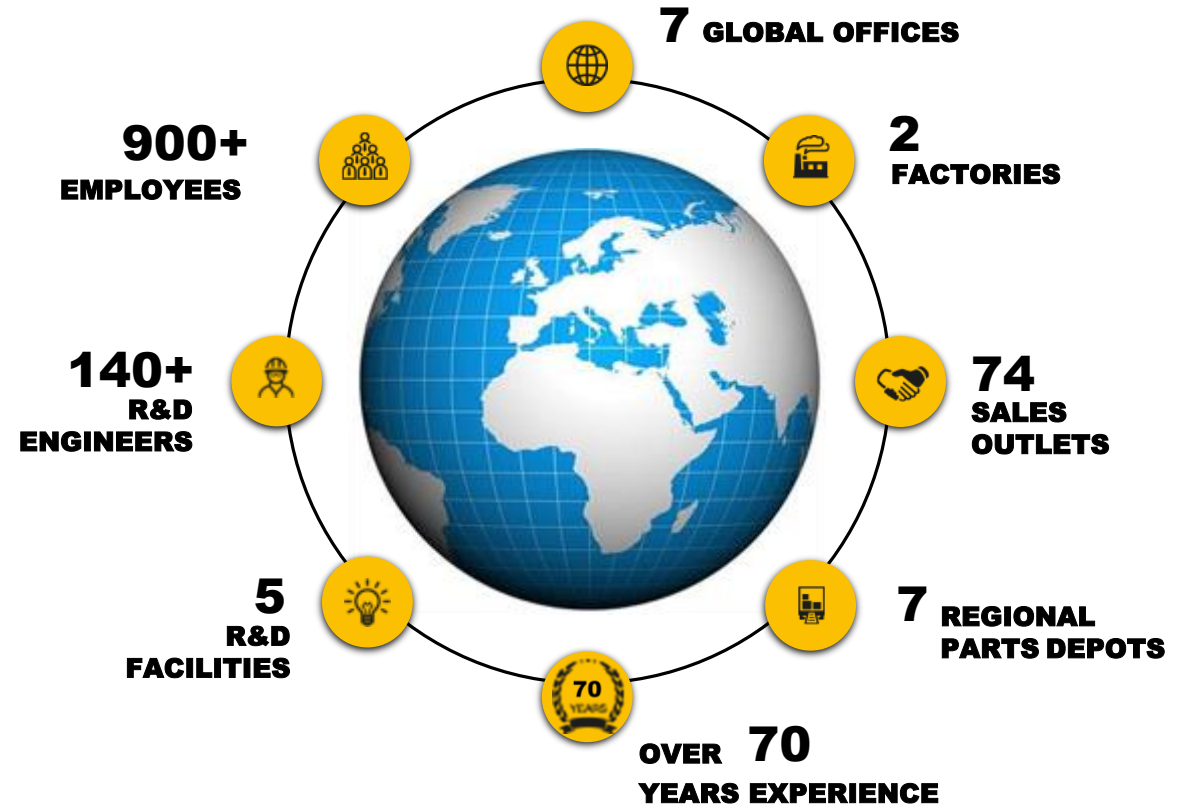
**DRIVELINES, GEARS**

# About Dressta

*Dressta is redefining crawler dozer productivity and durability with its customer focused approach to design and manufacturing.*

## Core Competencies

- Design Innovation
- Heavy Equipment specialists
- Customer centric
- Manufacturing excellence
- Parts, service & technical support
- Quality assured
- Safety always
- Environment first



# About ZZN



***Empowering OEM's in Rail, Construction,  
Agriculture, Energy & Defense***

***A combination of 40 years experience,  
advanced manufacturing technology,  
reliability & dedication to customer  
satisfaction make ZZN the partner of choice"***

- Transmissions, gear & hydrostatic
- Drive axles with torque from 3150 to 3700 Nm
- Steering drive units & final drive assemblies
- Specialist gears, crown wheels & Pinions

## OUR CLIENTS



**PKP cargo**



# Vision

## DEDICATION

*“To deliver productive earthmoving solutions  
to professionals in the construction  
and mining industries.”*

**XIAO XIAOLEI**  
PRESIDENT

# Mission

## DEDICATION

*“We are committed to delivering high quality, reliable and powerful machines coupled with full technical service & parts support whilst tailoring machines to individual customer needs, helping them achieve more in the jobs they do.”*

**HOWARD DALE**

CHAIRMAN

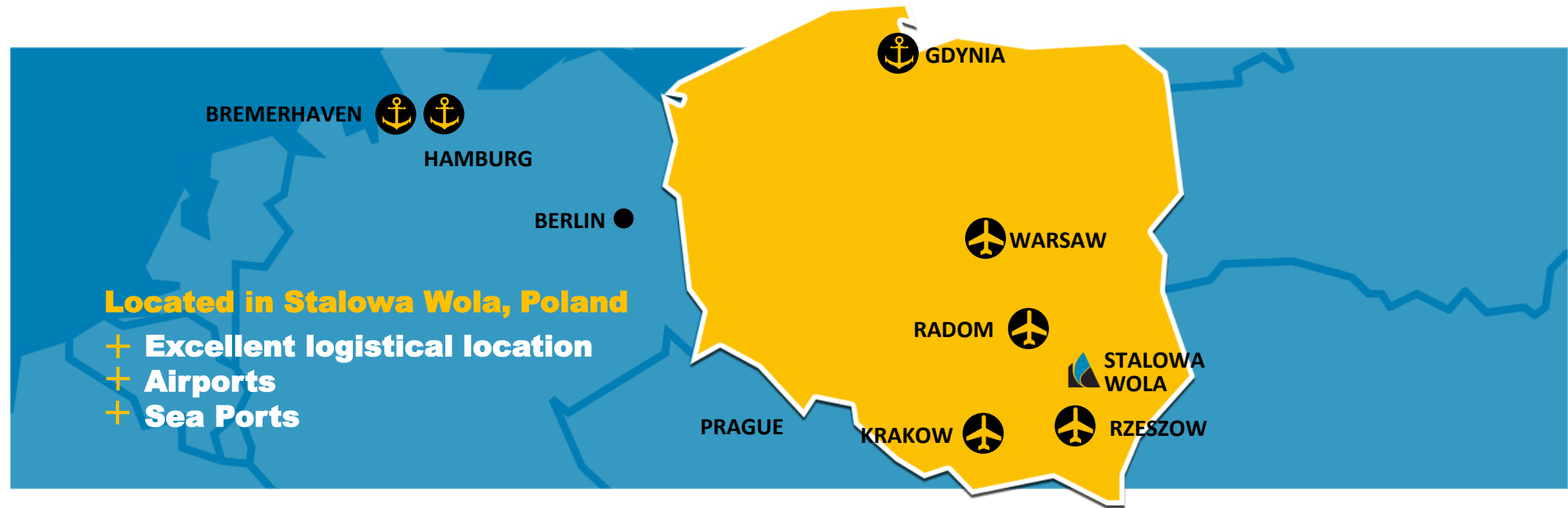
# Global Distribution Reach

DRESSTA WORLDWIDE



# Our Home

IN THE HEART OF EUROPE



# Our Value Proposition

HEAVY EQUIPMENT SPECIALISTS

## ENGINEERED FOR YOUR BUSINESS

HIGH PRODUCTIVITY +

DURABILITY +

EASE OF MAINTENANCE +

## PERFORMANCE & PRODUCTIVITY

+ CUSTOMER DRIVEN DESIGN

+ EXTREME CONDITIONS

+ EXTREME APPLICATIONS



# Manufacturing

**QUALITY AND SAFETY**

**Manufacturing excellence  
with a strong commitment  
to quality and safety standards for employees.**



**BUILD-TO-ORDER  
BUSINESS MODEL**



**MANUFACTURING  
EXCELLENCE**



**SAP  
INTEGRATED**



**6 SIGMA  
METHODOLOGY**



# Quality Assured



**Relentless attention to quality**

## **EXHAUSTIVE PRODUCT TESTING**

- + ACCELERATED HOURS**
- + SOUND & VIBRATION**
- + APPLICATION & FIELD**



# Innovation

COMMITTED TO THE SUCCESS OF OUR CUSTOMERS

**A global R&D capability...**

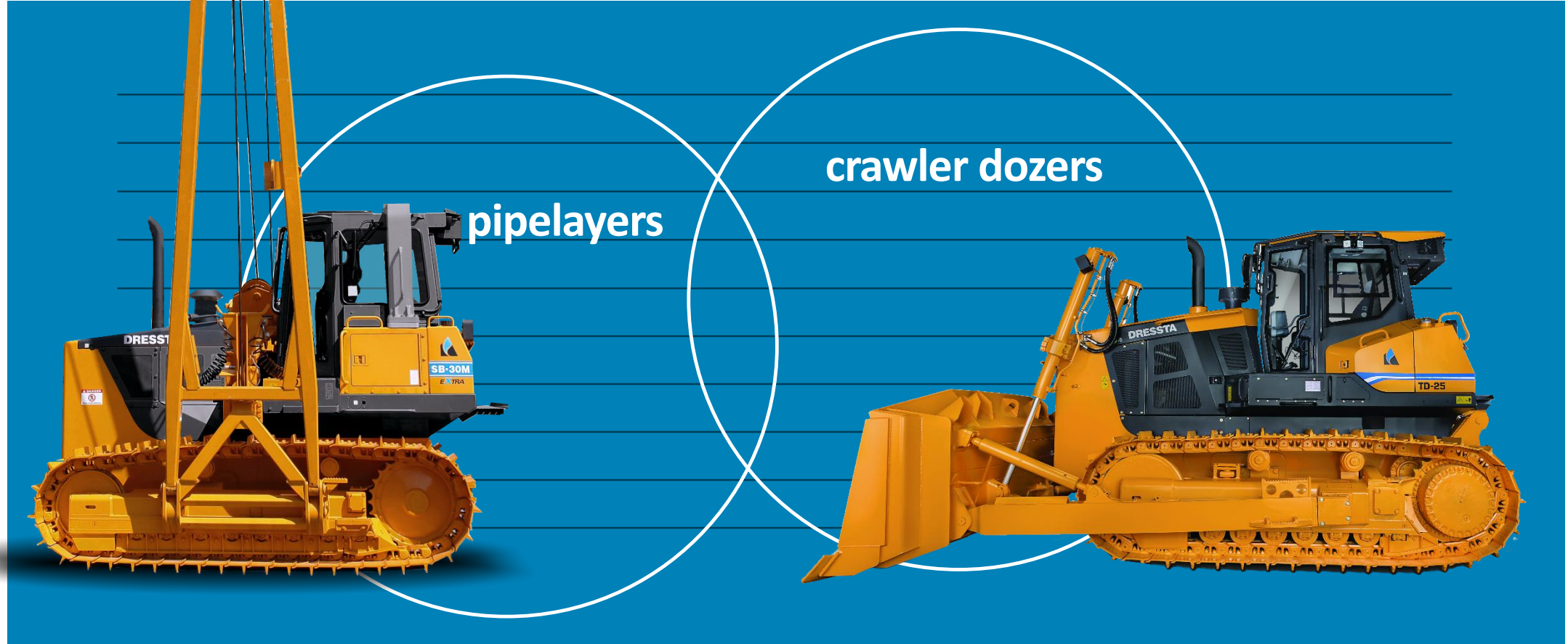
**Poland, UK, USA, China, India**





# Products

# What do we produce?



# Full Line of Dozers

FROM 78 TO 536 HP



**TD-8**

Engine 78 – 94 hp | Weight 8,5 t - 10 t



**TD-9**

Engine 93 – 113 hp | Weight 9,4 t - 11 t



**TD-10**

Engine 102 hp | Weight 9,5 t



**TD-14**

Engine 161 hp | Weight 15,5 t - 17,6 t



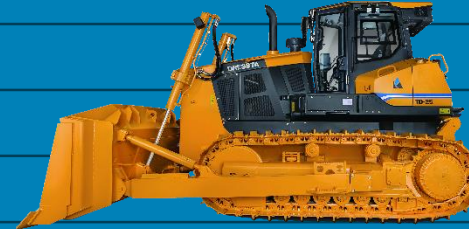
**TD-15**

Engine 190 – 205 hp | Weight 20,6 t – 21,6 t



**TD-20**

Engine 240 – 248 hp | Weight 24,0 t – 25,2 t



**TD-25**

Engine 330 hp | Weight 41,2 t – 41,5 t



**TD-40**

Engine 515 - 536 hp | Weight 67,7 t

# Our dozers are engineered for...

+ HIGH PRODUCTIVITY

+ HIGH DRAWBAR PULL

+ STABILITY

+ PRECISE CONTROL

+ EXCELLENT VISIBILITY AND  
MAXIMUM OPERATOR COMFORT

+ MOVE MORE MATERIAL IN  
LESS TIME

+ OPTIMUM OWNING & OPERATING COSTS

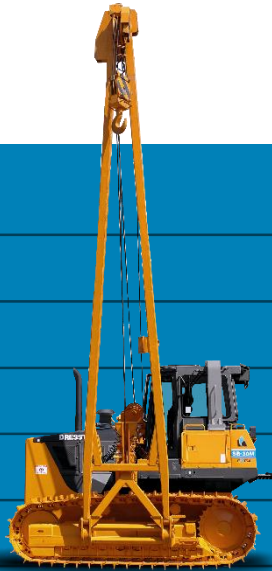
+ VERSATILITY ACROSS A WIDE  
RANGE OF APPLICATIONS

+ DURABILITY YOU  
CAN DEPEND ON



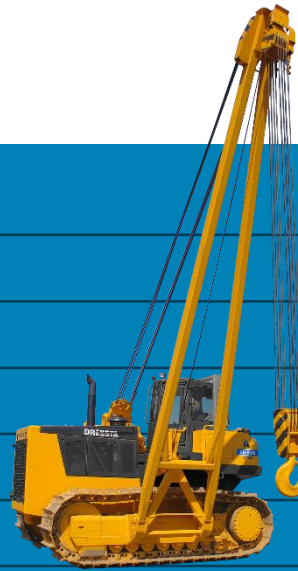
# A Range of Pipelayers

LIFTING CAPACITY FROM 33 TO 100 tons



**SB-30**

Engine 140 HP | Weight 27,6 t  
Lifting 33.1 t



**SB-60**

Engine 319 HP | Weight 51.1 t  
Lifting 72.0 t



**SB-85**

Engine 370 HP | Weight 68,0 t  
Lifting 100.0 t

# Pipe dream? Meet reality.

- + OUTSTANDING LIFT PERFORMANCE
- + UNRIVALLED STABILITY
- + LOW EFFORT CONTROLS
- + A RANGE OF BOOM LENGTHS
- + DRESSTA BOOM PROP SYSTEM
- + ROBUST, DEPENDABLE DESIGN
- + SAFE LOAD MANAGEMENT



# Engineered for your Business

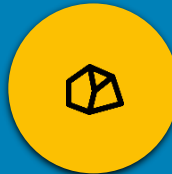
## INDUSTRIES SERVED



**ARCTIC  
APPLICATIONS**



**BELT  
SHIFTING**



**COAL  
COMPACTION**



**COAL  
HANDLING**



**CONSTRUCTION**



**FIRE  
TRACTORS**



**FORESTRY**



**FOUNDRY**



**LANDFILL**



**LANDSCAPING**



**MATERIAL  
HANDLING**



**QUARRY**



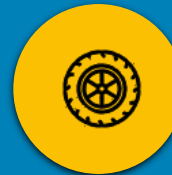
**PIPE  
LAYING**



**MINING**



**SHIP  
TRIMMING**



**ROAD &  
HIGHWAY**

# Managing the Extremes

DRESSTA PERFORMANCE

**-40°C**

**+60°C**



# Work Your Way

## SPECIAL FEATURE REQUESTS



**MINING**



**ROAD AND HIGHWAY**



**HOT SLAG**



# People

# Voice of the Customers

*„Just having satisfied customers isn't good enough anymore. If you really want a booming contracting business with reliable machine and support, Dressta dozers is the answer.”*

**PIETER MOCKE**

**TECHNICAL MANAGER, KCS, DEMOCRATIC  
REPUBLIC OF THE KONGO**



*„Machines are fulfilling all the requirements of our jobsite. High efficiency, strength, eco-friendly Cummins engine in line with the latest emissions and noise regulations in Europe, big capacity blade and increased operator comfort.”*

**MAREK PIEKARSKI**

**GRUDZEŃ LAS, SAND QUARRY  
EXTRACTION FOREMAN, POLAND**



*„Our jobsites are in remote locations and extreme conditions. Dressta dozers are easy to maintain and also very durable for any condition, which helps us to concentrate more on the job.”*

**DMITRY V. MANSIN**

**PURCHASE DIRECTOR, ALROSA,  
RUSSIA**



# Values

SHARED BY OUR PEOPLE



**CUSTOMER  
ORIENTED**



**PEOPLE  
FOREMOST**



**ASSURING  
THE FUTURE  
BY QUALITY**



**CREATE VALUE  
TROUGH  
COOPERATION**

# Sustainability

**ENVIRONMENTAL PROTECTION**

**LABOR RELATIONS**

**TRANSPARENCY**

**SOCIAL RESPONSIBILITY**

**LONG LASTING PARTNERSHIPS**

**HEALTH & SAFETY**



**Society**  
**Environment**  
**Economy**

**One tree is planted for  
each machine we produce.**

**SOCIAL RESPONSIBILITY**





**WE MAKE  
THE EARTH MOVE**

