



560E  
WHEEL LOADER

■ Net Horsepower  
319 kW (427 hp)

■ Bucket Capacity  
5.35 m<sup>3</sup> to 11.5 m<sup>3</sup>  
(7 yd<sup>3</sup> to 15 yd<sup>3</sup>)

■ Operating Weight  
41 980 kg (92,549 lb)

Big machine comfort and power with fast cycle times and low cost of ownership

Front frame mounted ROPS Cab provides excellent visibility and operator comfort

Optional high lift arrangement

Massive, independently mounted, box section boom

Automatic boom kick-out and bucket leveler provides an fast duty cycle and high productivity

Forced oil cooled, maintenance free wet disc brakes provide a long, fade resistant life

Heavy duty axles to handle the largest loads

Well located standard traveling and working halogen lights and auxiliary front mounted lights

319 kW ( 427 hp ) Cummins QSX15 engine meets EU Stage IIIA and EPA Tier3 emission standards

Hydraulically driven, variable speed fan for high cooling efficiency, greatly lessens the blasting of debris against the radiator core

Joystick actuated hydraulic controls for easy, comfortable and precise control of the bucket

Hydrostatic steering system and tilt/telescopic steering column

Simple, electrically controlled, countershaft, soft shift transmission with 3 speeds forward and reverse

Sight gauges and ground level servicing provide for quick daily maintenance and checks

Widely spaced center hinge pins with double-tapered roller bearings for long life

Heavy duty front and rear frames with castings at critical locations

The frame weldments are made from high strength steel and incorporate castings at critical locations to absorb heavy weights shock loads and racking forces.

Independent box section booms provide more strength with less weight on the front end of the machine. This improves machine stability, provides less tire loading and lowers tire heat generation in load and carry applications. High strength castings at each end of the boom arms distribute stresses and ensure thousands of hours of trouble free life.

Z-Bar linkage transfers maximum force to the bucket to pry out hard material. All loader linkage pins are sealed to keep out abrasive dust and grit.

on breakout  
and packed  
are sealed  
it.

Widely spaced upper and lower hinge pins pivot on double-tapered roller bearings. The hinge plates are designed to allow stresses to smoothly dissipate into the frame.

## ENGINE

\* Make and model . . . . . Cummins QSX15  
Type . . . . . In-line, 6-cylinder  
Aspiration . . . . . Turbocharged and CAC  
Fuel system . . . . . HPI Electronic  
Gross Horsepower SAE J1995 . . . . . 336 kW (450 hp)

\*\* Net Horsepower SAE J1349/ISO 9249 . . . . . 319 kW (427 hp)  
Rated rpm . . . . . 2000 rpm  
Max. torque @ 1400 rpm . . . . . 2102 Nm (1,550 lb-ft)  
Displacement . . . . . 15 l (912 in<sup>3</sup>)  
Bore and stroke . . . . . 137 x 169 mm (5.39" x 6.65")  
Air cleaner . . . . . dry type, dual stage with  
dust discharge valve

\* Meets EU Stage IIIA and EPA Tier 3 emission regulations

\*\* Net Horsepower at the minimum speed of hydraulic fan 333 kW (445 hp)

## TORQUE CONVERTER

Single stage, single phase type, 2.72 to 1 stall ratio.

## TRANSMISSION

Electrically controlled, full soft shift transmission, driven by a double universal joint from the torque converter.

Single lever control for easy and precise control of gear and direction changes.

## TRAVEL SPEEDS

| Gear | Forward & Reverse |        |
|------|-------------------|--------|
|      | km/h (mph)        |        |
| 1st  | 7.1               | (4.4)  |
| 2nd  | 12.2              | (7.6)  |
| 3rd  | 32.5              | (20.2) |

## AXLES

Heavy-duty type with full-floating axle shafts and planetary final drive.

Four wheel drive. Front axle fixed, rear axle oscillates a total of 23°.

Vertical wheel travel of 559 mm (22"). Conventional differentials.

## STEERING

Articulated frame. Hydrostatic type providing smooth steering control at any engine speed.

Tilting and telescoping steering column for operator efficiency.

Articulation, right or left . . . . . 35°

Turning radius outside of standard tires . . . . . 8.03 m (26'4")

## BRAKES

Service – Four wheel, hydraulic applied, sealed, force cooled, internal, multiple wet disc brakes with separate axle-by-axle operation.

Parking – Spring applied, hydraulically released, disc type, located on front axle.

## TIRES

Standard: 29.5 x 29, 34 PR (L-4).

## HYDRAULIC SYSTEM

Reservoir: Cylindrical type with 10  $\mu$  filtration for excellent full flow filtering, suction screen.

Pumps, gear type, driven from torque converter:

– triple element (loader equipment and steering, auxiliary and brake cooling pump)

– double element (hydraulic equipment and steering and pilot pump)

Equipment Hyd.: aggregate output @ 2000 rpm and 6.89 MPa (1,000 psi) - 530 l/min (140 gpm)

Steering Hyd.: aggregate output @ 2000 rpm and 6.89 MPa (1,000 psi) - 390 l/min (103 gpm)

Valve: Two spool with relief valve, single lever control

Relief valve pressure 21 MPa (3,000 psi).

Cylinders (double acting) – hardened chrome plated piston rods.

Boom – Bore and Stroke (2) . . . . . 216 x 1219 mm (8.5" x 48")

Bucket – Bore and Stroke (1) . . . . . 254 x 749 mm (10" x 29.5")

Steering – Bore and Stroke (2) . . . . . 127 x 489 mm (5" x 19.25")

Raise boom 9.1 sec. Lower boom 5.6 sec.

Dump bucket in 2.8 sec.

## REFILL CAPACITIES

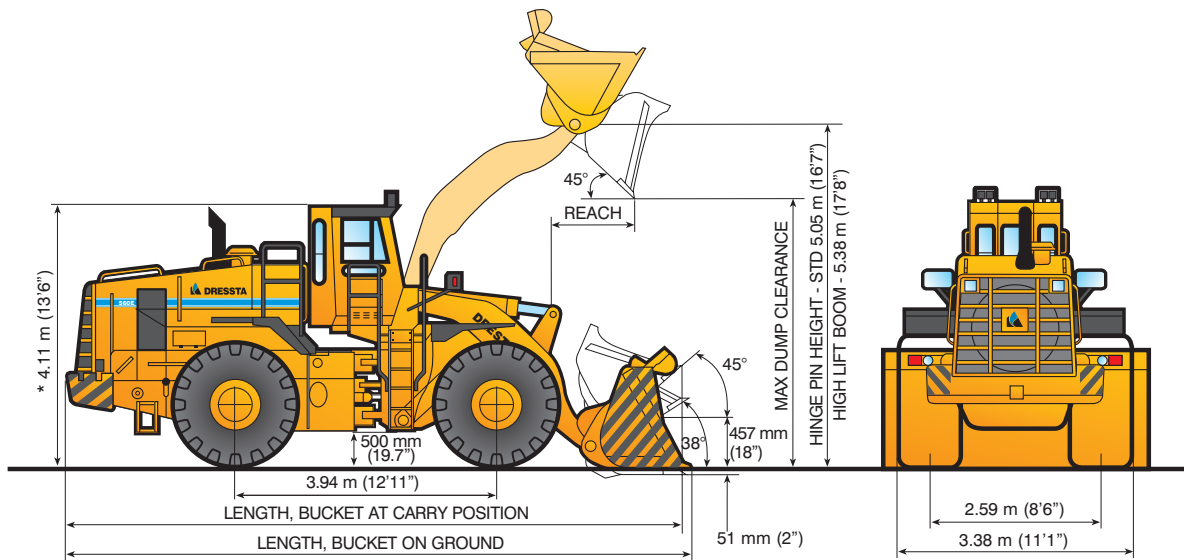
|                                  | Liter | (US gal) |
|----------------------------------|-------|----------|
| Fuel tank                        | 700   | (185)    |
| Cooling system                   | 82    | (21.7)   |
| Crankcase w/filter               | 49    | (13)     |
| Transmission system              | 144   | (38)     |
| Differential & final drive, each | 88    | (23)     |
| Hydraulic reservoir              | 206   | (54)     |
| Hydraulic system                 | 382   | (101)    |

## INSTRUMENTATION

Gauges: engine coolant temperature, engine oil pressure, hourmeter, torque converter oil temperature, voltmeter

Warning lights: parking brake applied, partial brake system failure warning, engine coolant overheat, trans. & hyd. filter change indicator, torque converter overheat, low fuel level, service brake

Visual sight gauges: hydraulic reservoir, radiator coolant, air cleaner service indicator, transmission oil, fuel level



\*Add 240 mm (9.5") to overall height if roof mounted lights are used

## STANDARD BOOM

| BUCKET SELECTION                                     |   | Rock                  |                       |                       |                          | General Purpose       |                          | Coal                  |
|--|---|-----------------------|-----------------------|-----------------------|--------------------------|-----------------------|--------------------------|-----------------------|
|  |   | Spade Nose            | Spade Nose with teeth | Straight Edge         | Straight Edge with teeth | Straight Edge         | Straight Edge with teeth | Straight Edge         |
| Capacity, SAE  | Rated, m <sup>3</sup> (yd <sup>3</sup> )  | 5.7 (7.5)             | 5.7 (7.5)             | 5.7 (7.5)             | 5.7 (7.5)                | 6.5 (8.5)             | 6.5 (8.5)                | 11.5 (15.0)           |
|  | Struck, m <sup>3</sup> (yd <sup>3</sup> ) | 4.7 (6.1)             | 4.7 (6.1)             | 4.7 (6.1)             | 4.7 (6.1)                | 5.4 (7.1)             | 5.4 (7.1)                | 9.7 (12.8)            |
| Bucket Width   |   | 3.65 m (143.5")       | 3.65 m (143.5")       | 3.65 m (143.5")       | 3.65 m (143.5")          | 3.65 m (143.5")       | 3.65 m (143.5")          | 4.47 m (176")         |
| Dump Clearance @ Max. Height and 45° Dump Angle      |   | 3.48 m (11'5")        | 3.34 m (10'11")       | 3.59 m (11'9")        | 3.38 m (11'1")           | 3.48 m (11'5")        | 3.27 m (10'9")           | 3.25 m (10'8")        |
| Reach @ Max. Height and 45° Dump Angle               |   | 1.63 m (5'4")         | 1.77 m (5'10")        | 1.52 m (5')           | 1.74 m (5'8")            | 1.62 m (5'4")         | 1.83 m (6')              | 1.87 m (6'2")         |
| Reach @ 2.13 m (7') Clearance and 45° Dump Angle     |   | 2.44 m (8')           | 2.45 m (8'1")         | 2.33 m (7'8")         | 2.54 m (8'4")            | 2.43 m (8')           | 2.64 m (8'8")            | 2.68 m (8'9")         |
| Overall Length, Bucket @ Carry Position              |   | 9.77 m (32'1")        | 9.92 m (32'6")        | 9.67 m (31'9")        | 9.88 m (32'5")           | 9.78 m (32'1")        | 9.99 m (32'9")           | 10.01 m (32'10")      |
| Overall Length, Bucket on Ground                     |   | 9.91 m (32'6")        | 10.11 m (33'2")       | 9.76 m (32')          | 10.06 m (33')            | 9.91 m (32'6")        | 10.21 m (33'6")          | 10.25 m (33'8")       |
| Turning Radius, Outside Corner of Bucket @ SAE Carry |   | 8.64 m (28'4")        | 8.72 m (28'7")        | 8.60 m (28'3")        | 8.68 m (28'6")           | 8.64 m (28'4")        | 8.72 m (28'7")           | 9.15 m (30')          |
| Static Tipping Load                                  | Straight                                  | 32 672 kg (72,029 lb) | 32 411 kg (71,453 lb) | 32 762 kg (72,277 lb) | 32 499 kg (71,647 lb)    | 32 116 kg (70,803 lb) | 31 863 kg (70,245 lb)    | 32 807 kg (72,326 lb) |
|  | Full Turn                                 | 28 388 kg (62,584 lb) | 28 161 kg (62,084 lb) | 28 466 kg (62,756 lb) | 28 238 kg (62,253 lb)    | 27 905 kg (61,519 lb) | 27 685 kg (61,034 lb)    | 28 505 kg (62,842 lb) |
| Breakout Force                                       |   | 317.7 kN (71,419 lb)  | 317.7 kN (71,419 lb)  | 351.2 kN (78,950 lb)  | 351.2 kN (78,950 lb)     | 319.3 kN (71,779 lb)  | 319.3 kN (71,779 lb)     | 262.6 kN (59,032 lb)  |
| Operating Weight                                     |   | 41 820 kg (92,196 lb) | 42 170 kg (92,968 lb) | 41 650 kg (91,822 lb) | 41 980 kg (92,549 lb)    | 41 310 kg (91,072 lb) | 41 625 kg (91,766 lb)    | 42 450 kg (93,585 lb) |

Specifications shown include all standard equipment.

All dimensions, weights and performance values per SAE J732 where applicable. Machine stability, weight and performance are affected by optional equipment.

## HIGHLIFT ARRANGEMENT

| BUCKET SELECTION                                     |           | ROCK BUCKETS                                |   |
|--|-----------|---|---|
|  |           | Spade Nose with Teeth                       | Straight Edge with Teeth                    |
| Capacity, SAE  | Rated     | 5.35 m <sup>3</sup> (7.0 yd <sup>3</sup> )  | 5.35 m <sup>3</sup> (7.0 yd <sup>3</sup> )  |
|  | Struck    | 4.49 m <sup>3</sup> (5.87 yd <sup>3</sup> ) | 4.41 m <sup>3</sup> (5.77 yd <sup>3</sup> ) |
| Bucket Width   |           | 3.65 m (143.5")                             | 3.65 m (143.5")                             |
| Dump Clearance @ Max. Height and 45° Dump Angle      |           | 3.78 m (12'5")                              | 3.88 m (12'9")                              |
| Reach @ Max. Height and 45° Dump Angle               |           | 1.80 m (5'11")                              | 1.70 m (5'7")                               |
| Reach @ 2.13 m (7') Clearance and 45° Dump Angle     |           | 2.75 m (9')                                 | 2.67 m (8'9")                               |
| Overall Length, Bucket @ Carry Position              |           | 10.32 m (33'10")                            | 10.24 m (33'7")                             |
| Overall Length, Bucket on Ground                     |           | 10.51 m (34'6")                             | 10.37 m (34')                               |
| Turning Radius, Outside Corner of Bucket @ SAE Carry |           | 8.95 m (29'4")                              | 8.91 m (29'3")                              |
| Static Tipping Load                                  | Straight  | 27 041 kg (59,615 lb)                       | 27 609 kg (60,867 lb)                       |
|  | Full Turn | 23 495 kg (51,797 lb)                       | 23 989 kg (52,886 lb)                       |
| Breakout Force                                       |           | 332.7 kN (74,790 lb)                        | 367.7 kN (82,659 lb)                        |
| Operating Weight                                     |           | 42 424 kg (93,528 lb)                       | 42 225 kg (93,089 lb)                       |

# 560E

## WHEEL LOADER

- Air cleaner, dry type, dual stage with dust discharge valve
- Alarm, back-up
- Alternator, 80 A
- Antifreeze, -37°C (-34°F)
- Axles, heavy duty, full floating, planetary type final drives, 4-wheel drive
- Batteries, cold start, 12V, 1900 CCA, maintenance free
- Boom kickout, automatic
- Boom, standard
- Brakes: service (SAE J1152, CODE EM 385-1-1), 4-wheel wet multi disc, full hydraulic apply, with axle-by-axle operation, R.H. pedal applies brakes only; parking, disc type on front differential, spring apply/hydraulic release with indicator light
- Bucket leveler, automatic (bucket application only)
- Cab ROPS/FOPS (SAE J1040) with sound suppression, dome light, heater/pressurizer/defroster, inside mirror, front and rear wipers and washers
- Cooling module; includes radiator, transmission oil cooler, hydraulic oil cooler, fuel cooler, charge air cooler; isolation mounted
- Counterweight, 2900 kg (6,390 lbs)
- Differentials, conventional
- Fan, hydraulically driven, suction type, variable speed
- Filters: engine oil, transmission, torque converter and hydraulic oil, cartridge type element
- Grill, rear, vertically hinged
- Horn, electric
- Hydraulic controls, single lever
- Hydraulic system, closed with pressure control
- Instruments:
  - Gauges: engine coolant temperature, engine oil pressure, hourmeter, torque converter oil temperature, voltmeter, tachometer
  - Visual sight gauges: hydraulic reservoir, radiator coolant, air cleaner service indicator, transmission oil, fuel level
  - Warning lights: parking brake applied, partial brake system failure warning, engine coolant overheat, trans. & hyd. filter change indicator, torque converter overheat, low fuel level, service brake filter restriction
- Ladders: L.H. - cab access, R.H. - service ladder
- Lifting eyes and tie downs
- Lights, halogen, working and traveling, 4 front, 2 rear, 2 stop and tail, turn signals
- Lube system, ground level
- Mirrors, R.H. and L.H. rearview
- Muffler, underhood, insulated
- Panels, engine compartment side, quick access service
- Seat, adjustable, suspension type with arm rests, fabric cover
- Seat belt (SAE J386)
- Starting,

# DRESSTA

Kwiatkowskiego 1, 37-450 Stalowa Wola, P O L A N D  
tel.: +48 15 813 5252, 15 813 4556    fax: +48 15 813 4763  
sales@dressta.com.pl    www.dressta.com.pl