

SB-60M Extra

PIPELAYER

EPA Tier 3/EU Stage IIIA
STANDARD

ENGINE

	SB-60M Extra
Make and model	Cummins QSM 11
Emissions Standard	EPA Tier 3/EU Stage IIIA
Displacement	11l (671 in3)
Bore and stroke	125 x 147 mm (4.92 in x 5.79 in)
Gross Horsepower, SAE J1995	261 kW (350 hp)
Net Horsepower, SAE J1349/ ISO 9249	231 kW (310 hp)
Rated rpm	2000
Max . Torque	1830 Nm (1350 lb ft)
Air Cleaner	2-stage, dry type with, exhaust aspirated primary and safety element and service indicator
Cold-Starting Aid	intake- mounted air -inlet grid heater

ELECTRICAL

	SB-60M Extra
Voltage	24 V
Number of batteries	4
Battery capacity	960 CCA
Alternator rating	50 A
Lights	10 total; cab mounted (2F& 2R), 2F grill, 2R fuel tank , 1 boom, 1 winch mounted

OPERATOR STATION

	SB-60M Extra
ROPS	ROPS (ISO 3471 - 2008)
FOPS	FOPS (ISO 3449 - 2005)

COOLING

	SB-60M Extra
Type	suction- type variable-speed fan, hydraulically driven with perforated engine side sheets and heavy duty louvered front grill
Engine coolant rating	-50 deg C to +40 deg C (-58 deg F to +104 deg F)

OPERATING WEIGHTS

	SB-60M Extra
operation weight, standard equipment, Cab ROPS/FOPS, full fuel tank, and 79-kg [175 lb.] operator	51280kg (113052 lb)

HYDRAULICS

	SB-60M Extra
Type	Open-center hydraulic system with fixed-displacement multiple piston and gear pumps
System relief pressure	winch hook and boom 35 MPa (5215 psi); counterweights 12 MPa (1,790 psi)
Control	two lever for winch two lever for counterweight

OPTIONAL COMPONENTS

	SB-60M Extra
Track Shoes	
860 mm (34 in)	574 kg (1265 lb)

POWERTRAIN

TD-60M Extra

Transmission	Single stage 330 mm (13 in) torque converter with a 2.5:1 stall ratio drives to transmission through a double universal joint. Modular, countershaft type power shift transmission, electro-hydraulic control. Preset travel speed selection and auto-downshift.
Steering	Exclusive 2-speed geared steering module provides gradual turns while maintaining full power to both tracks plus conventional clutch-brake performance for tight or pivot turns. Coupled to 3-speed transmission, the 2-speed steering provides 6 speeds forward and 6 reverse. The left hand joystick controls transmission and steering drive for up and down shifting, steering, Hi/Lo selection and LH/ RH gradual geared turn.
Final drives	Double-reduction planetary type final drives mounted independently of track frames for isolation from shock loads

Total ratio		25.5 to 1	
Travel speeds			
Gear	Range	Forward	Reverse
		km/h (mph)	km/h (mph)
1st	Low	2.8 (1.7)	3.4 (2.1)
	High	3.7 (2.3)	4.5 (2.8)
2nd	Low	4.8 (3.0)	5.9 (3.7)
	High	6.3 (3.9)	7.6 (4.7)
3rd	Low	7.8 (4.8)	9.4 (5.8)
	High	10.1 (6.3)	12.2 (7.6)
Brakes			
Service		Spring applied hydraulically released multi-disc wet brakes. Foot pedal piloted control	
Parking		The steering brakes also act as service and parking brakes. Service brakes are locked automatically when the transmission safety lever is actuated or when the engine is cut off.	

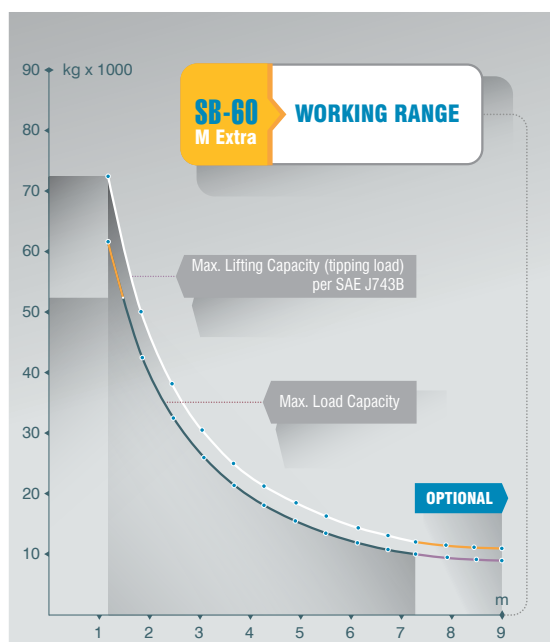
UNDERCARRIAGE

SB-60M Extra

Suspension	Rigid type
Tracks	Large deep-heat-treated, sealed, and lubricated track links and through-hardened, sealed, and lubricated rollers for maximum wear resistance
Track Gauge	2340 mm (7 ft 8 in)
Track Shoe Width	762 mm (30 in)
Chain	Sealed and lubricated
Shoes, Each Side	41
Track Rollers, Each Side	8
Track Length on Ground	3520 mm
Ground Contact Area	53645 cm ² (8315 in ²)
Ground Pressure	96.8 kPa (13.6 psi)
Track Pitch	250 mm (9.86 in)
Sprocket segments, each side	8

TRAVEL SPEEDS - LIFTING CAPACITY

SB-60M Extra



SERVICEABILITY

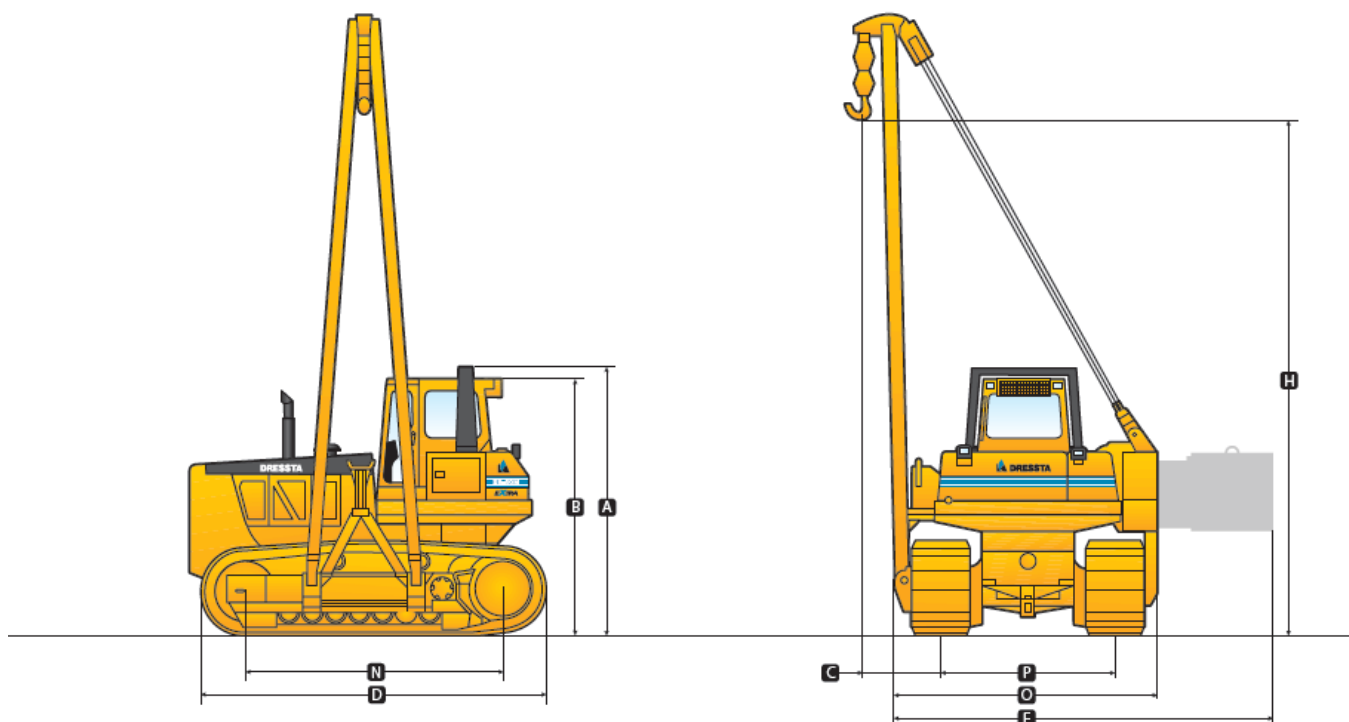
SB-60M Extra

Refill capacities

Fuel Tank	690 l (184 US gal)
Cooling System	46 l (12.3 US gal)
Engine Oil	40 l (10.7 US gal)
Transmission System	240 l (64 US gal)
Final drive, each side	95 l (25.3 US gal)
Hydraulic Reservoir	195 l (52 US gal)

MACHINE DIMENSIONS

A Overall Height -ROPS	3910 mm (12 ft 10 in)
B Overall Height -FOPS cab	3800 mm (12 ft 6 in)
C Overhang, min	1220 mm (4 ft)
D Operating length	5460 mm (17 ft 11 in)
E Width of tractor (counterweight extended)	5490 mm (18 ft)
H Hook height max w/std boom	6500 mm (21 ft 4 in)
N Length track on ground	3520 mm (11 ft 7 in)
O Width of tractor counterweight/boom removed	3600 mm (11 ft 10 in)
P Track gauge	2340 mm (7 ft 8 in)



PIPELAYING EQUIPMENT

Boom length std/optional	7,315 mm / 9,000 mm (24 ft / 29 ft 6 in)
Counterweights	Adjustable hydraulically controlled 4pcs / 9360kg
Live power	continuous power to pipelayer winches independent of torque converter
Winch transmission	operated independently or simultaneously sliding gear planetary, 2 speed for raising ,2 speed for lowering
Drums diameter (hook &boom)	359 mm (14.1 in) /359 mm (14.1 in)
Wire rope length (inside flanges) hook/boom	92 m (301 ft 10 in) / 78 m (255 ft 11 in)
Wire rope diameter	19 mm (3/4 in)
Hook speed:	
raise 1st	10.5 m/min (34.4 ft/min)
raise 2nd	19.8 m/min (65 ft/min)
lower 1st	10.2 m/min (33.5 ft/min)
lower 2nd	19.4 m/min (63.6 ft/min)
max lifting capacity per SAE 743B	72 t (158731 lb)

STANDARD EQUIPMENT SB-60M Extra

ENGINE

Engine: Cummins QSM11, Tier 3/EU Stage IIIA, emission certified, turbocharged, direct start, direct injection, 231 kW (310 fwhp)

Air cleaner, dry type, with exhaust aspirated primary, safety elements and service indicator

Antifreeze: -37°C (-34°F)

Cooling module; includes radiator, transmission oil cooler, hydraulic oil cooler, charge air cooler; isolation mounted

Coolant filter conditioner

Exhaust pipe extension

Fan, hydraulically driven

Filters, oil, spin-on type

Filters, drive train system, hydraulic system, fuel system

Muffler, under engine hood, insulated

Strainers, fuel and hydraulic tanks

Water separator, fuel system

DRIVETRAIN

Torque converter, single stage

Transmission, power shift, 3 speeds forward, 3 reverse combined with 2 speed steering provides 6 speeds forward, 6 reverse

Steering, planetary type, 2 speed, left hand single lever control (joystick)

Diagnostic center for power train pressures

Brakes, wet, multiple disc, closed type, spring applied, hydraulically released

Decelerator - right foot pedal, and brake - center foot pedal

OPERATOR'S ENVIRONMENT

Cab with sound suppression, air recirculation system, lights: 2 front & 1 side (LH), 4 wipers w/washers, dome light, inside mirror, roof window and emergency hatch (approved according to FOPS - SAE J231)

Seat, deluxe, air suspension type, fabric cover, adjustable with arm rest

Seat belt (SAE J386) - 3" wide, retractable

Sun visor for front cab window

Tools compartment

BOOM

Lifting capacity - 72 000 kg (158,731 lb) with counterweights extended (per SAE J743B)

Boom, welded type, box-section structure, 'A' shape frame, length - 7315 mm (24')

Boom kickout, uppermost position

Brake, hook lowering, auxiliary

Emergency hook lowering system

Load capacity indicator, mechanical, on boom frame

INSTRUMENTATION

Gauges: fuel level, engine coolant temperature, engine oil pressure, torque converter oil temp., voltmeter, hourmeter, brake lock, emergency hook lowering, joystick control display

Warning lights: air cleaner filter, transmission oil filter, hydraulic oil filter, transmission/clutch oil low pressure, counterweights extended, hook top limit position, boom top limit position

Audible & visual warning system: low engine coolant level, low engine oil pressure, coolant high temperature, hydraulic oil high temperature

ELECTRICAL

Alarm, back-up

Alternator 50 A

Batteries, (4) 12 V, 1920 CCA, maintenance free, cold start

Horn, electric

Light, boom

Lights, w/guards, 2 front, 2 rear, tractor mounted

Receptacle, starting/charging

Starting, 24 V

Starting aid - air grid heater

GUARDS

Guards: crankcase - hinged with front pull hook, fan, transmission

Engine hood, soild, sloped

Engine side doors, hinged, perforated type

Final drive seal guard

Radiator guard doors, two-piece, louvered, hinged

UNDERCARRIAGE

Track adjusters, hydraulic

Track chain, sealed and lubricated (LTS) with split master link, 41 links

Track chain guides, integral

Track frames, 8 roller, 2340 mm (92") gauge, non-oscillating type, lifespan lubricated rollers and idlers

Track shoes, 762 mm (30")

OTHER STANDARD EQUIPMENT

Bumper, front

Counterweights, adjustable, hydraulically controlled, 4-block and 2-counterweight frames (total weight extendable - 11640 kg)

Drawbar, fixed

Ecological drains for engine oil, radiator coolant and hydraulic oil

Manuals, parts and operator's

Rear access platform

Winch transmission (two separate winches for hook and boom with hydrostatic drive system and planetary transmission)

OPTIONAL EQUIPMENT SB-60 M Extra

WORKING ATTACHMENTS

Boom, welded type, box-section structure length - 7315 mm (24') with electronic load limit indicator

Boom, welded type, box-section structure length - 9000 mm (29' 6") with or without electronic load limit indicator

Hook pulley block limit switch, uppermost position

TRACK SHOES

860 mm (34") shoes

OPERATOR'S ENVIRONMENT

Air conditioner/heater/pressurizer/defroster, underseat mounted, behind roof mounted A/C condenser

Heater/pressurizer/defroster

ROPS, for use with standard Cab

For use with cab:

- AM/FM CD radio
- Lights for cab, 2 rear
- Mirrors, 2 pcs, exterior, cab mounted
- Sun visors (2), additional, for side door windows

GUARDS

Sprocket dirt deflector

Track roller guards, full length

ADDITIONAL OPTIONS

Beacon light, rotating

Inspection lamp, 24 V, portable, with 6 m (20') cable

Light, winch

Rubber protection stripes, bolted, For use with standard 7315 mm or for use with 9000 mm boom

Starting/charging receptacle plug assembly with cable (required to jump start or charge batteries)

Vandalism protection

Maintenance tool kit, 17 items in a metal box

1000 h maintenance package (filters)

1500 h maintenance package (filters)

2000 h maintenance package (filters)

SFR

Export packing, SB-60, drive-on / drive-off, Machine on the trailer

Export packing, SB-60, drive-on / drive-off, Machine on the railway wagon, cab disassembled and protected in box, right frame disassembled

Cab disassembled and protected in box

Right frame disassembled

At Dressta we take pride in innovating to help our customers to achieve more in the jobs they do.

Our dedicated team of application engineers can customize designs, modify standard equipment and adapt attachments for peak performance in specific application tasks, improving productivity and bottom line results.

Do you have a Special Feature Request? See how Dressta can help you achieve more in the jobs you do.

Specifications may change from time to time and this brochure may not reflect the latest specifications. Photographs in this brochure may not reflect market configuration. Please consult your dealer to confirm specifications and configurations.



Dressta encourages safe worksites.

Please consult operator's manual before use of any Dressta equipment.



info@dressta.com
www.dressta.com

DR-SP-SB60M-T3-A4-30062017-ENG