



**SB-85R**  
PIPELAYER

**EXTRA**



■ **Net Horsepower**  
276 kW (370 hp)

■ **Max Lifting Capacity**  
100 000 kg (220,460 lb)

■ **Operating Weight**  
64 480 kg (142,153 lb)

# Specification

## ENGINE

* Make and Model.....	CUMMINS QSX15
Type .....	diesel, in-line, 6-cylinder aftertreatment system – Cummins Particulate Filter (DPF) + Selective Catalytic Reduction (SCR); electronic controls (ECM)
Aspiration .....	Turbocharged and Charge Air Cooler (CAC)
Fuel system .....	High Pressure Injection (HPI)
Gross Horsepower @ 2000 rpm .....	306 kW (410 hp)
** Flywheel power @ 2000 rpm .....	276 kW (370 hp)
Maximum torque @ 1400 rpm .....	1825 Nm (1346 lb ft)
Displacement .....	15 l (915 in <sup>3</sup> )
Bore and Stroke .....	137 x 169 mm (5.39" x 6.65")
Electrical system .....	24 V
Air Cleaner .....	Cummins Filtration Direct Flow <sup>TM</sup> , dry type, precleaner, exhaust aspiration, electronic service indicator

\* Meets EU Stage IV and EPA Tier 4 Final emission regulations on diesel engines used in off-road applications. The engine requires to use:

- Ultra Low Sulfur Diesel (ULSD)
- Diesel Exhaust Fluid (DEF) per ISO 22241

\*\* Net Horsepower at the minimum speed of hydraulic fan 303 kW (406 hp)

## TRANSMISSION & TORQUE CONVERTER

Modular countershaft type power shift, hydraulically controlled and actuated.

Single stage 409 mm (16") torque converter with a 2.7:1 stall ratio drives to transmission through a double universal joint.

## TRAVEL SPEEDS

High-low power shift in each transmission gear.

Gear	Range	Forward		Reverse	
		km/h	(mph)	km/h	(mph)
1st	low	3.1	(1.9)	3.7	(2.3)
	high	4.0	(2.5)	4.8	(3.0)
2nd	low	5.2	(3.2)	6.2	(3.9)
	high	6.6	(4.1)	7.9	(4.9)
3rd	low	8.1	(5.0)	9.6	(6.0)
	high	10.3	(6.8)	12.2	(7.6)

## STEERING & BRAKING

Two-speed geared steering module provides gradual turns while maintaining full power to both tracks plus conventional clutch-brake performance for tight or pivot turns. This type of steering system offers superior traction in all types of operations and terrain. Coupled to 3-speed transmission, the 2-speed steering provides 6 speeds forward and 6 reverse. The left hand joystick controls transmission and steering drive for up and down shifting, steering, Hi/Lo selection and LH/RH gradual geared turn.

Foot pedal applies both brakes for parking and downhill control. Brakes are spring applied and hydraulically released.

## FINAL DRIVES

Double-reduction module provides desired gear reduction at the sprocket. Three-piece bolt-on sprocket distributes wear evenly over track bushings letting every tooth ride free one-half of the time to reduce wear. Final drives or sprockets are replaceable without removing track frames.

## TRACK FRAME

Non-oscillating type, all-welded heavy box section track frame.

Track rollers each side.....	8
Top idlers each side.....	2
Front idlers (drum type) each side .....	1
All rollers and idlers .....	lifespan lubricated

## TRACKS

The split master link reduces chain removal and installation time.

Track shoe width, standard .....	915 mm (36")
Track shoes each side.....	46
Ground contact area with std. shoes .....	7.3 m <sup>2</sup> (11,304 in <sup>2</sup> )
Ground pressure .....	86.6 kPa (12.6 psi)
Grouser height.....	76 mm (3")
Track adjustment.....	full hydraulic
Ground clearance.....	660 mm (26")
Fixed drawbar – height from ground to centerline of 95 mm (3.75") clevis .....	719 mm (28.3")

## REFILL CAPACITIES

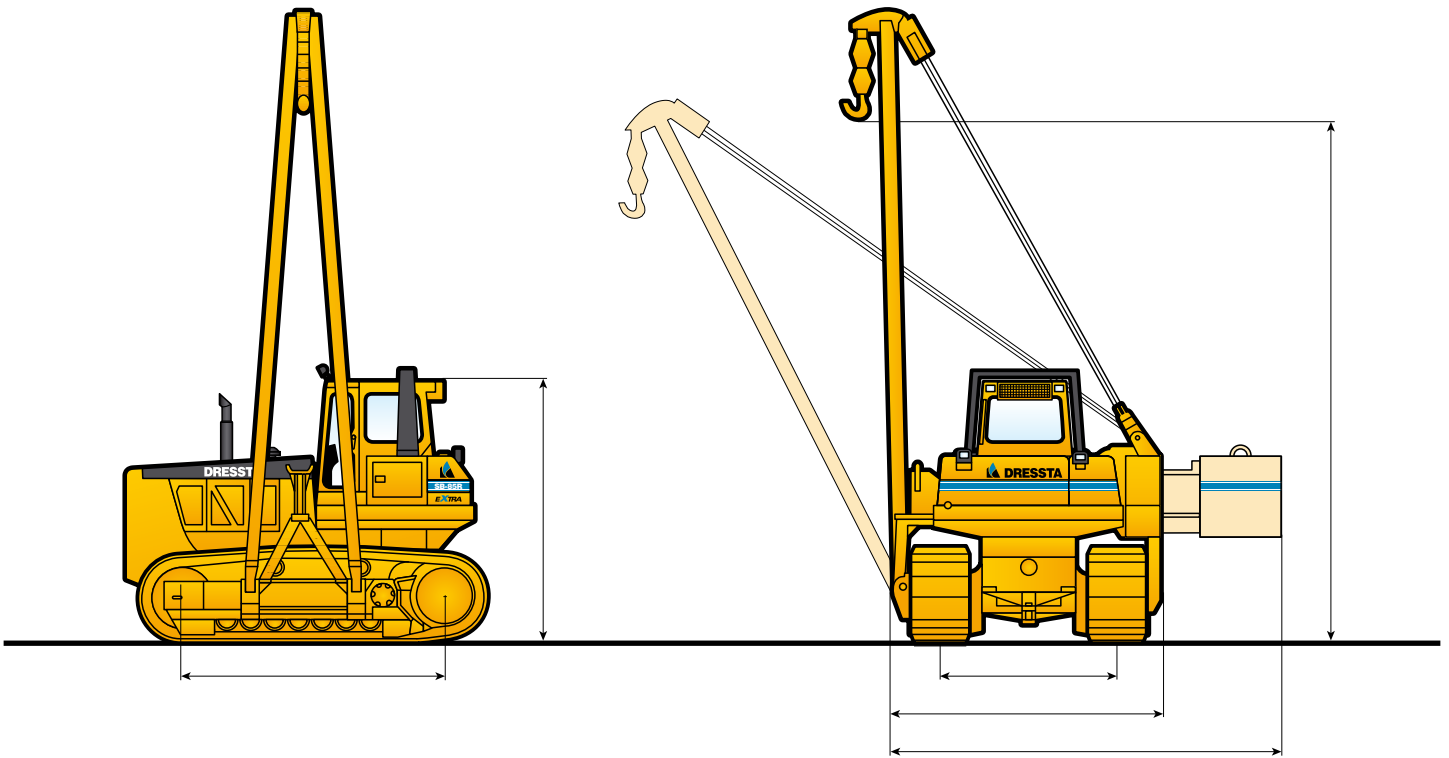
	Liter	(US gal)
Fuel tank	700	(185)
Cooling system	68	(18)
Engine lubrication, incl. filters	49	(13)
Transmission system	270	(71)
Sprocket drive, each side	84	(22)
Hydraulic system	290	(77)

## OPERATING WEIGHT

Includes std. equipment and full fuel..... 64 480 kg (142,153 lb)

## OVERALL DIMENSIONS WITH EQUIPMENT

Width, counterweights retracted.....	4.1 m (13'5")
Width, counterweights extended .....	5.86 m (19'3")
Height without boom (with cab) .....	4.0 m (13'1.5")
Track on ground.....	3.985 m (13'1")



\* DIMENSIONS INCLUDE 76 mm (3") GROUSER HEIGHT

## PIPELAYING EQUIPMENT

### COUNTERWEIGHTS

Adjustable, hydraulically controlled:

Counterweight frames .....	3040 kg	(6,220 lb)
4 blocks at 2400 kg (5,291 lb) each .....	9310 kg	(19,048 lb)
Total weight extendable .....	12350 kg	(25,268 lb)

### LIVE POWER

Continuous power to pipelayer winches, independent of torque converter.

### WINCH TRANSMISSION

Sliding gear, 2 speeds for raising, 2 for lowering.

### DRUMS

Operated independently or simultaneously.

	HOOK	BOOM
Drum diameter.....	338 mm (13.3")	338 mm (13.3")
Flange diameter.....	690 mm (27.16")	690 mm (27.16")
Length (inside fanges).....	426 mm (16.8")	196 mm (7.7")
Max capacity with		
22.2 mm (7/8") cable .....	106 m (347'9")	74 m (242'9")

### HOOK SPEEDS (bare drum)

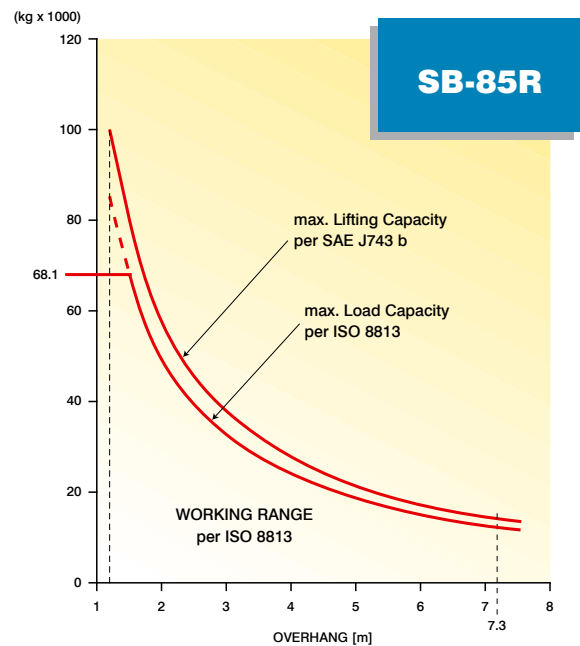
Raise: .....	m/min	(ft/min)
- First.....	6.7	(22.0)
- Second.....	14.8	(48.5)

Lower: .....		
- First.....	9.1	(30.0)
- Second.....	20.1	(65.9)

### BOOM

Welded box section. Length of standard boom - 7.3 m (24') and optional boom - 9.0 m (29'6.3").

### LIFTING CAPACITY



- SPECIFIED EQUIPMENT
- 22.2 mm (7/8") WIRE ROPE, 35652 kg (78,598 lb) MINIMUM BREAKING STRENGTH
  - 9 PART LOAD LINE
  - 5 PART BOOM LINE
  - COUNTERWEIGHTS EXTENDED - 9310 kg (19,048 lb)



## STANDARD EQUIPMENT

- Air cleaner, Cummins Filtration Direct Flow dry type, with exhaust aspirated primary, precleaner, and service indicator
- Alarm, back-up
- Alternator, 105 A
- Antifreeze, -37°C (-34°F)
- Batteries, (4) 12 V, 1920 CCA, maintenance free, cold start
- Boom kickout, uppermost position
- Boom welded type, box-section structure, length 7 315 mm (24')
- Brakes, wet, multiple disc, closed type, spring applied, hydraulically released
- Bumper front
- Cab with sound suppression, air recirculation system, lights: 2F and 1 side (LH), 4 wipers w/washers, inside mirror, dome light, roof window and emergency hatch (approved according to FOPS - SAE J231)
- Coolant filter conditioner
- Cooling module, includes radiator, transmission oil cooler, fuel cooler, hydraulic oil/fan drive oil cooler, charge air cooler, isolation mounted
- Counterweights, adjustable, hydraulically controlled 4-blocks and 2-counterweight frames
- Decelerator, foot operated
- Drawbar, fixed
- Emergency hook lowering system
- Engine hood, solid, sloped
- Engine side doors, hinged, perforated type
- Exhaust pipe extension
- Fan, hydraulically driven, suction type, variable speed
- Filters, oil, full flow and by-pass with replaceable elements
- Filters, transmission, hydraulic and fuel system
- Guards: crankcase, fan, radiator, transmission
- Heater/pressurizer/defroster
- Horn electric
- Hourmeter, electric
- Instrument panel light
- Instruments, in resilient mounted panel
- Light, boom
- Lights w/guards, 2 front on tractor, 1 rear
- Load capacity indicator, mechanical, on boom frame
- Muffler
- Radiator guard doors, two-piece, louvered, hinged
- Rear access platform
- Receptacle, charging
- Seat belt (SAE J386) - 3' wide, retractable
- Seat, suspension type with arm rests
- Starting, 24 V
- Steering, planetary type, 2 speed
- Strainers: fuel and hydraulic tank
- Tools compartment
- Torque converter, single stage
- Track adjusters, hydraulic
- Track chain guides, integral
- Track chain sealed and lubricated (LTS) with split master link, 46 links
- Track frames, 8 roller, 2.70 m (106") gauge, non-oscillating type, lifespan lubricated rollers and idlers
- Track shoes 915 mm (36"), severe service
- Transmission, power shift, 3 speeds forward, 3 reverse combined with 2 speed steering provides, 6 speeds forward, 6 reverse
- Water separator, fuel system
- Winches, two separate, for hook and boom, with hydrostatic drive system and planetary transmission

## OPTIONAL ATTACHMENTS

- Air conditioner /heater/pressurizer/defroster
- AMFM radio
- Engine enclosures: perforated hood
- Flash beacon light
- Guards:
  - Track roller
  - Sprocket dirt/rock deflector
- Light, winch, cab mounted (RH)
- Lights, 2 rear, cab mounted
- Mirrors (2), exterior, RH & LH
- ROPS, 2 post (SAE 1040) for standard cab.  
Must be ordered to meet CE requirements
- Starting/charging receptacle plug assembly with 4.6 m (15') cable
- Tools in metal box
- Working attachments:
  - boom, welded type, box section structure, length 9000 mm (29'6")
  - boom, length 7315 mm (24') for use with load limit indicator
  - boom, length 9000 mm (29'6") for use with load limit indicator
  - load limit indicator, Tensortronic
  - hook pulley block limit switch, uppermost position
  - load capacity indicator, mechanical, for 9000 mm (29'6") boom
- Vandalism protection

Specifications subject to change without notice. Illustrations and pictures may include optional equipment and may not include all standard equipment.

# DRESSTA

[www.dressta.com](http://www.dressta.com)  
[sales@dressta.com](mailto:sales@dressta.com)