

TD-40E Extra

CRAWLER DOZERS

EPA Tier 3 / EU Stage IIIA
STANDARD

ENGINE

	TD-40E Extra
Make and model	Cummins QSK19
Emissions standard	EPA Tier 3/EU Stage IIIA
Displacement	19 l (1150 in ³)
Bore and stroke	159 x 159 mm (6.25 in x 6.25 in)
Gross horsepower, SAE J1995	418 kW (560 hp)
Net horsepower, SAE J1349/ ISO 9249	384 kW (515 hp)
Rated rpm	2000
Max. torque	2379 Nm (1,755 lb-ft)
Air cleaner	2-stage, dry type, with dash mounted electronic service indicator
Cold-starting aid	ether start
Slope operation, max. angle	45 deg

HYDRAULICS

	TD-40E Extra
Type	Open-center hydraulic system with fixed-displacement multiple-pump vane type
Pump displacement	398 l/min (105 gpm)
System relief pressure	blade lift & ripper 17 MPa (2,400 psi) blade tilt 18.4 MPa (2,670 psi)
Control	single joystick lever
Cylinders, bore and stroke	
lift	152.4 x 1760 mm (6.0" x 69.3")
tilt	254 x 175 mm (10" x 6.9")
tilt/pitch	220 /254 x 175 mm (8.6"/10" x 6.9")

ELECTRICAL

	TD-40E Extra
Voltage	24 V
Number of batteries	4
Battery capacity	960 CCA
Alternator rating	105 A
Lights	8 total; cab mounted (2F & 2R), 2F lift cylinders and 2R fuel tank mounted

COOLING

	TD-40E Extra
Type	Suction-type variable-speed fan, hydraulically driven with perforated engine side sheets and heavy-duty louvered front grill
Engine coolant rating	-37 °C (-34 °F)

OPERATOR STATION

	TD-40E Extra
ROPS	ROPS (ISO 3471 - 2008)
FOPS	FOPS (ISO 3449 - 2005)

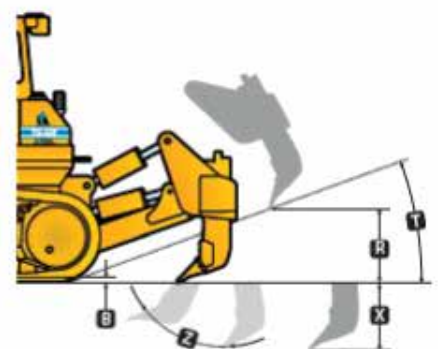
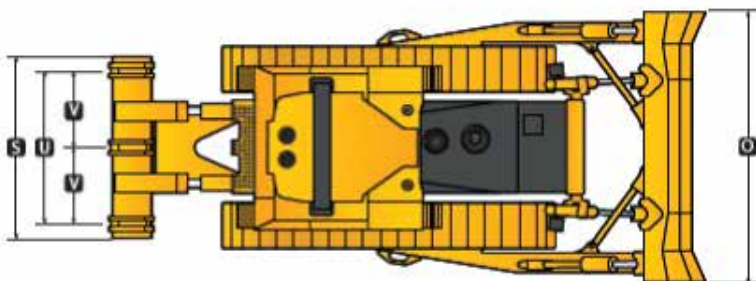
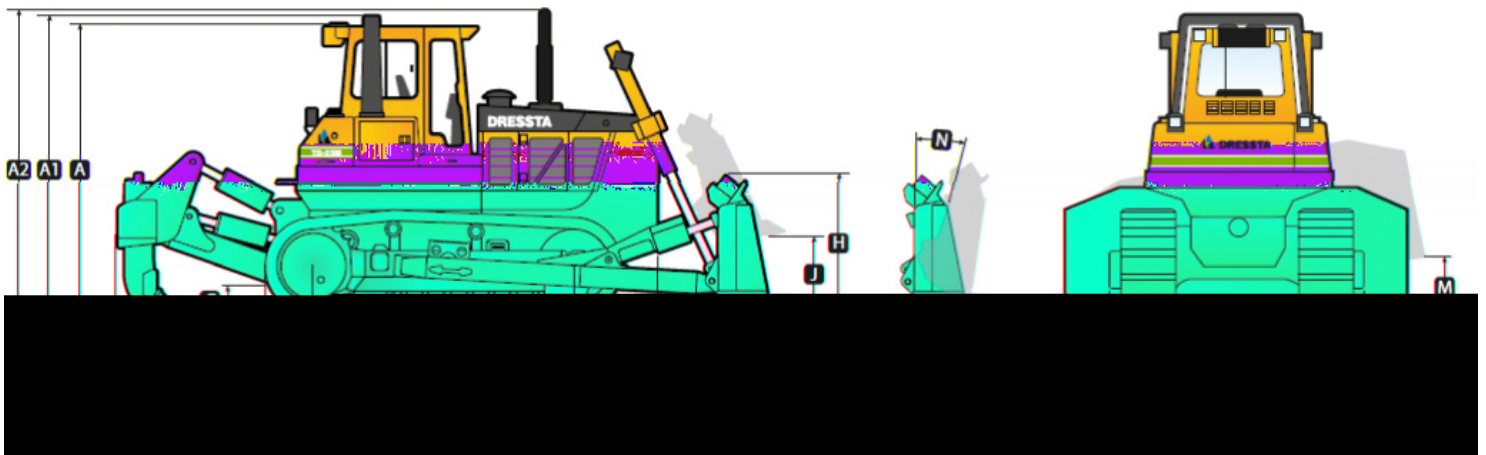
UNDERCARRIAGE

	TD-40E Extra
Suspension	Oscillation-type with equalizer bar and forward mounted pivot shafts
Tracks	Large deep-heat-treated, sealed, and lubricated track links and through-hardened, sealed, and lubricated rollers for maximum wear resistance
Track gauge	2500 mm (8 ft 2 in)
Track shoe width	610 mm (24 in)
Chain	Sealed and lubricated
Shoes, each side	39
Track rollers, each side	7
Track length on ground	3610 mm (11 ft 10 in)
Ground contact area	44000 cm ² (6816 sq. in)
Ground pressure	151 kPa (21.9 psi)
Track pitch	280 mm (11 in)
Sprocket sements, each side	1

MACHINE DIMENSIONS

TD-40E Extra

A Overall height - FOPS Cab	4,060 mm (13' 10")
A1 Overall height - ROPS	4,220 mm (13' 10")
A2 Overall height - end of exhaust pipe	4,410 mm (14' 6")
B Grouser height	93 mm (3.66 in)
C Ground clearance	600 mm (23.7 in)
D Overall length, base machine	5,750 mm (18' 10")
D1 Length with blade	6.94 m (22 ft 9.4 in)
D2 Length with blade and 1-shank / 3-shank ripper	10.35 m / 9.76 m (34 ft / 32 ft)
E Track length on ground	3,610 mm (11' 10")
F Width over track	3,110 mm (10' 2")
F1 Width over trunnions	3,730 mm (12' 3")
G Track gauge	2,500 mm (8' 2")



BLADE SPECS

Type	TD-40E Extra		
	Semi-U	Full-U	Coal
SAE capacity	18.6 m ³ (24.3 yd ³)	22.8 m ³ (29.8 yd ³)	39.8 m ³ (52 yd ³)
H Blade height	2,230 mm (7' 4")	2,260 mm (7' 5")	2,500 mm (8' 2")
I Blade width	4,810 mm (15' 9")	5,180 mm (17')	6850 mm (22' 6")
J Blade lift height	1,530 mm (5' 0.2")	1,530 mm (5' 0.2")	1,460 mm (4' 9.5")
K Blade angle	-	-	-
L Blade digging depth	830 mm (32.7 in)	830 mm (32.7 in)	875 mm (34.4 in)
M Maximum tilt	1,150 mm (45.3 in)	1,250 mm (49.2 in)	1,650 mm (65 in)
N Maximum blade pitch adjustment	10°	10°	10°
O Overall width with blade angled	-	-	-

RIPPER

Type	TD-40E Extra		
	Single-shank (Standard)	Single-shank (Deep Dig)	Multi-shank (3-shank)
Parallelogram ripper with hydraulic pitch adjustment			
R Maximum clearance under tip (raised)	1,000 mm (39 in)	720 mm (28 in)	950 mm (37 in)
S Overall beam width	1,670 mm (65.7 in)	1,670 mm (65.7 in)	2,880 mm (113.5 in)
T Slope angle (full raise)	30.8°	30.8°	30.8°
U Ripping width	-	-	2,380 mm (94 in)
V Spacing center to center	-	-	1,190 mm (47 in)
X Maximum penetration	1,290 mm (51 in)	1,670 mm (66 in)	1,000 mm (39 in)
Z Maximum pitch adjustment	25.1°	25.1°	25.1°
Penetration force	200 kN (44,960 lb)	200 kN (44,960 lb)	205 kN (46,084 lb)
Pryout force	612 kN (137,578 lb)	612 kN (137,578 lb)	622.5 kN (139,938 lb)
Shank positions (vertical)	4	4	2
Weight of ripper incl. shank(s)	8,356 kg (18,422 lb)	8,461 kg (18,653 lb)	8,728 kg (19,242 lb)
Weight of shank	668 kg (1,473 lb)	773 kg (1,704 lb)	570 kg (1,260 lb)

OPERATING WEIGHTS

	TD-40E Extra
Base weight with Semi-U blade w/tilt, single-shank ripper, standard equipment, cab ROPS/FOPS, full fuel tank, and 79 kg [175 lb] operator)	67700 kg (149251 lb)
Optional components	
Ripper w/3 shanks	+ 372 kg (820 lb)
Track shoes	
660 mm (26 in)	+ 335 kg (740 lb)
800 mm (31.5 in)	+ 920 kg (2030 lb)

SERVICEABILITY

	TD-40E Extra
Refill capacities	
Fuel tank	1362 l (360 US gal)
Cooling system	89.5 l (23.6 US gal)
Engine oil	59.3 l (15.7 US gal)
Transmission system	270 l (71 US gal)
Final drive, each side	85 l (22.5 US gal)
Hydraulic reservoir	184 l (48.6 US gal)

POWERTRAIN

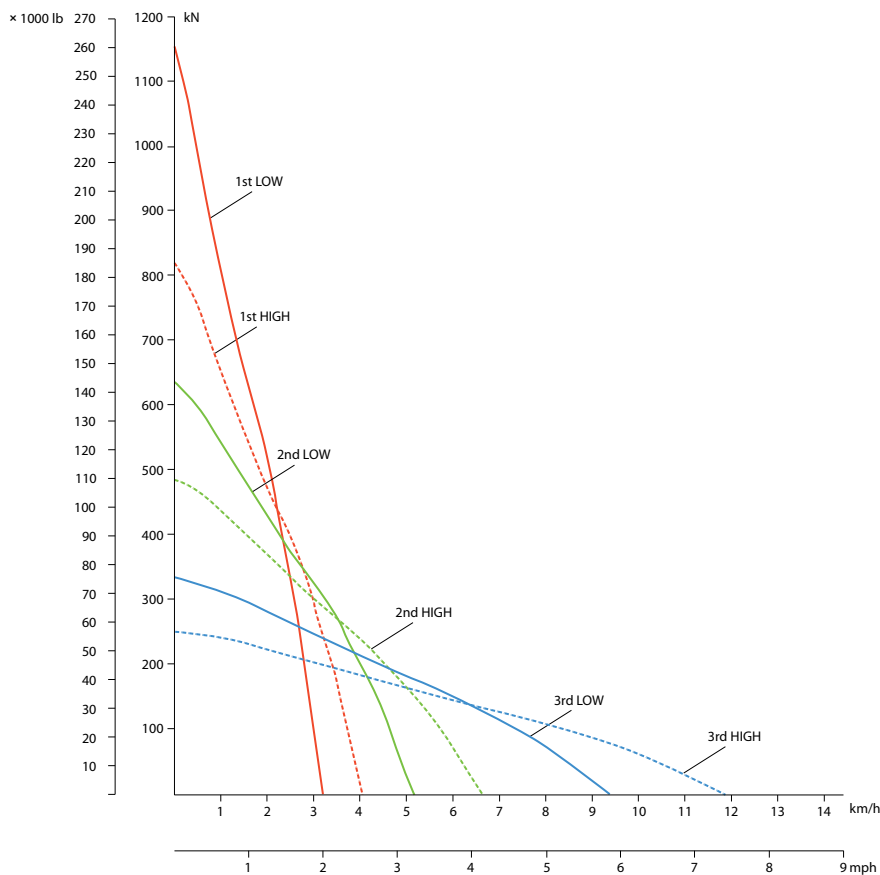
TD-40E Extra

Transmission	Single stage 432 mm (17 in) torque converter with a 2.3:1 stall ratio drives to transmission through a double universal joint. Modular, countershaft type power shift transmission, electro-hydraulic control. Preset travel speed and auto-downshift.
Steering	Exclusive 2-speed geared steering module provides gradual turns while maintaining full power to both tracks, plus conventional clutch-brake performance for tight or pivot turns. Coupled to 3-speed transmission, the 2-speed steering provides 6 forward and 6 reverse speeds. The left hand joystick controls transmission and steering drive for up and down gearshifting, steering, high/low selection and LH/RH gradual turn.
Final drives	Double-reduction planetary type final drives mounted independently of track frames and dozer push arms for isolation from shock loads
Total ratio	28.1 to 1

Travel speeds			
Gear	Range	Forward	Reverse
		km/h (mph)	km/h (mph)
1st	Low	3.2 (2.0)	4.1 (2.5)
	High	4.1 (2.5)	5.2 (3.2)
2nd	Low	5.2 (3.2)	6.5 (4.0)
	High	6.7 (4.2)	8.4 (5.2)
3rd	Low	9.4 (5.8)	11.7 (7.3)
	High	12.0 (7.5)	14.9 (9.3)
Maximum drawbar pull		1157 kN (261041 lb)	

Brakes

Service	Spring applied hydraulically released multi-disc wet brakes. Foot pedal piloted control.
Parking	The steering brakes also act as service and parking brakes. Service brakes are locked automatically when the transmission safety lever is actuated or when the engine is cut off.



STANDARD EQUIPMENT TD-40E Extra

ENGINE

Engine, Cummins QSK19, Tier 3, emission certified turbocharged, direct start, direct injection, 384 kW (515 fwhp)

Air cleaner, dry type with exhaust aspirated primary, safety elements and service indicator

Antifreeze, -34°F (-37°C)

Cooling module; includes radiator, transmission oil cooler, hydraulic oil/fan drive oil cooler, fuel cooler, charge air cooler (CAC); isolation mounted

Coolant filter conditioner

Exhaust, resonator with elbow

Fan, hydraulically driven, suction type, variable speed

Filters, engine oil, full flow and by-pass with replaceable "spin-on" elements

Fuel strainer

Muffler, under engine hood, insulated

Water separator, fuel system

DRIVETRAIN

Torque converter, single stage

Transmission, power shift, 3 speeds forward, 3 reverse, combined with 2 speed steering provides 6 speeds forward, 6 reverse, preset travel speed selection and auto-downshift

Steering, planetary type, 2 speed, left hand single lever control (joystick)

Filters, power train, equipment hydraulics, "spin-on" micro glass type

Brakes, foot, spring applied, hydraulically released

Decelerator - right foot pedal, and brake - center foot pedal

OPERATOR'S ENVIRONMENT

Air conditioner/heater/pressurizer/defroster, underseat mounted; behind roof mounted A/C condenser

AM/FM radio ready

Cab with 2 post ROPS, with sound suppression, 4 wipers w/ washers, inside mirror, dome light, tinted safety glass and air recirculation system (approved according to ROPS - SAE J1040 and FOPS - SAE J231)

Seat, air suspension type, fabric cover, adjustable with arm rests, swivel 14° to right

Seat belt (SAE J386) - 3" wide, retractable

Sun visor, front cab window

Tools compartment

INSTRUMENTATION

Gauges: fuel level, engine coolant temperature, engine oil pressure, drive train system oil temperature, voltmeter, hourmeter, tachometer

Engine ECM failure warning lights and switches

Gear, range, drive train and engine diagnostic display

Warning lights: air cleaner filter, drive train oil filters, hydraulic oil filters, transmission/clutch oil low pressure, coolant high temperature, drive train oil high temperature, fan drive oil filter

Audible and visual warning system: low engine coolant level, low engine oil pressure

ELECTRICAL

Alarm, back-up

Alternator 105 A

Batteries, (4) 12 V, 1920 CCA, maintenance free, cold start

Horn, electric

Lights for cab, 2 front, 2 rear

Lights with guards, 2 front - lift cylinders mounted, 2 rear - fuel tank mounted

Receptacle, charging

Starting, 24 V

UNDERCARRIAGE

Track adjusters, hydraulic

Track chain guides, integral

Track chain, sealed and lubricated (LTS) with split master link, 39 links

Track frame, 7 roller, 2500 mm (98") gauge, oscillating type, lifespan lubricated rollers and idlers

Track shoes, 610 mm (24") severe service, grouser type

GUARDS

Guards: crankcase (hinged) with front pull hook, transmission, fan, radiator and sprocket rock and dirt deflector

Engine hood, solid, sloped, partially perforated

Engine side doors, hinged, partially perforated

Final drive seal guard

Radiator guard doors, louvered, two-piece, hinged

HYDRAULIC CONTROLS

Hydraulic control, 3-spool, 1 lever with pilot operated blade control (lift/tilt), ready for ripper

OTHER STANDARD EQUIPMENT

Cylinders, lift, with quick drop valve

Diagnostic centers for power train and equipment hydraulic pressures

Drawbar, fixed counterweight, 2900 kg (6400 lbs)

Ecological drains for engine oil, radiator coolant and hydraulic oil

Manuals, parts and operator's

Rear operator platform

OPTIONAL EQUIPMENT TD-40E Extra

BLADE EQUIPMENT

Semi-U, 18.6 m³ (24.3 yd³), complete with all blade components, includes hydraulic tilt and manual pitch or hydraulic tilt/pitch; blade includes full width wear liner package

Full-U, 22.8 m³ (29.8 yd³), complete with all blade components, includes hydraulic tilt and manual pitch or hydraulic tilt/pitch; blade includes full width wear liner package

Coal Dozer, 39.8 m³ (52 yd³), complete with all blade components, includes hydraulic tilt and manual pitch or hydraulic tilt/pitch

REAR MOUNTED EQUIPMENT

Standard drawbar with additional counterweights additional 4 plates, 3945 kg (8690 lbs)

Ripper, multi-shank beam, with three shanks partially mounted, with hydraulic pitch, includes deduct for standard drawbar

Ripper with hydraulic pitch, single-shank beam, standard dig, with hydraulic pin puller and standard dig shank, partially mounted, includes deduct for standard drawbar

Ripper with hydraulic pitch, single-shank beam, deep dig, with hydraulic pin puller and deep dig shank, partially mounted, includes deduct for standard drawbar

TRACK SHOES

Track rollers, heavy duty

660 mm (26") shoes, severe service

762 mm (30") shoes, severe service

800 mm (31.5") shoes, severe service

OPERATOR'S ENVIRONMENT

Heater/pressurizer/defroster, cab without air conditioner (A/C)

For use with cab:

- Air recirculation system with MSHA filters, severe service
- AM/FM CD radio
- Defroster fans
- Mirrors, 2 pcs, exterior
- Sun visors (2), additional
- Lights, 2 additional, ROPS mounted

Canopy ROPS/FOPS

Includes vinyl seat, operator platform covers and instrument panel guard

GUARDS

Final drive rock guard

Track roller guard

Transmission & engine crankcase guards, severe service

ADDITIONAL OPTIONS

Inspection lamp, 24 V, portable, with 6 m (20') cable

Ether start

Fast fill - engine crankcase

Fast fill - fuel tank

Fast fill - hydraulic oil reservoir

Fast fill - power train oil reservoir

Starting/charging receptacle plug assembly (required to jump start or charge batteries) with 15 ft cable

Vandalism protection, for use with cab or canopy

Maintenance tool kit, 17 items in a metal box

Maintenance tool kit, 36 items in metal box

1000 h maintenance package (filters)

1500 h maintenance package (filters)

2000 h maintenance package (filters)

Sound suppression package

EXPORT PACKING

Export packing, drive-on / drive-off, machine on the trailer

Export packing, drive-on / drive-off, machine on the railway wagon

Cab disassembled, protected in box

SFRs

Air precleaner, turbine type (Enginaire), (sandy & dusty operating conditions)

Additional cab heating "AIRTRONIC"

Beacon light, rotating

Centralized Lubricating System

For machine with/without ripper

Coolant heater (Eberspacher), with additional fuel tank

Fuel heater 'Racor'

Heating for standard Fleetguard fuel filter

Trimble Ready Option

Factory preinstalled hydraulics, harness and brackets for the Trimble Grade Control System components

At Dressta we take pride in innovating to help our customers to achieve more in the jobs they do.

Our dedicated team of application engineers can customize designs, modify standard equipment and adapt attachments for peak performance in specific application tasks, improving productivity and bottom line results.

Do you have a Special Feature Request? See how Dressta can help you achieve more in the jobs you do.

Specifications may change from time to time and this brochure may not reflect the latest specifications. Photographs in this brochure may not reflect market configuration. Please consult your dealer to confirm specifications and configurations.



Dressta encourages safe worksites.

Please consult operator's manual before use of any Dressta equipment.